

15 Station Road Wem Shrewsbury SY4 5BQ



3 Bedroom House - Semi-Detached
£950 PCM

The features

- NEWLY RENOVATED 3 BEDROOM TERRACED HOME
- GENEROUS RECEPTION ROOM WITH LOG BURNER
- WC
- FURTHER BEDROOM
- LARGE REAR GARDEN
- ENTRANCE HALL
- NEWLY FITTED KITCHEN
- TWO DOUBLE BEDROOMS
- FAMILY BATHROOM
- EPC RATING C



****A FABULOUS RECENTLY RENOVATED THREE BEDROOM HOME****

Occupying an enviable position, ideal for commuters with the Railway Station being a short stroll away and ease of access to the A5/M54 motorway network.

The accommodation briefly comprises - Entrance Hall, Reception Room, newly fitted kitchen, Two Double Bedrooms, further bedrooms, newly fitted bathroom.

The property has the benefit of gas central heating, double glazing, good sized, established Rear Garden.

Property details

ENTRANCE HALL

RECEPTION ROOM

KITCHEN

WC

STAIRS AND LANDING

BEDROOM 1

BEDROOM 2

BEDROOM 3

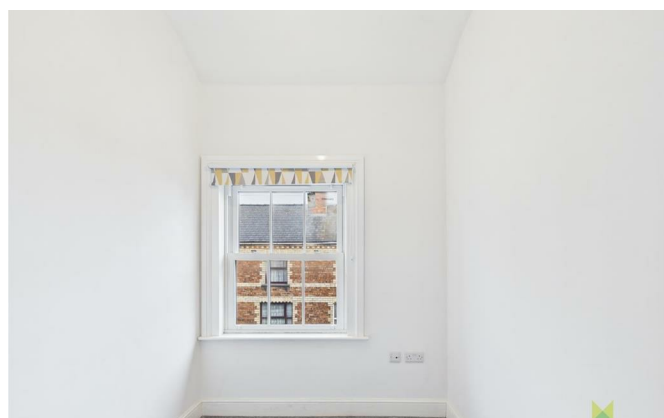
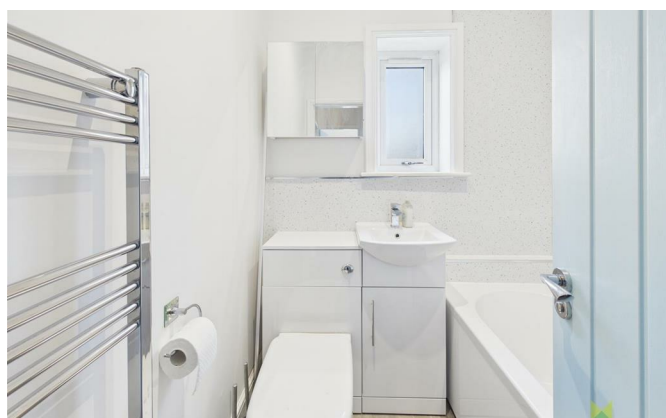
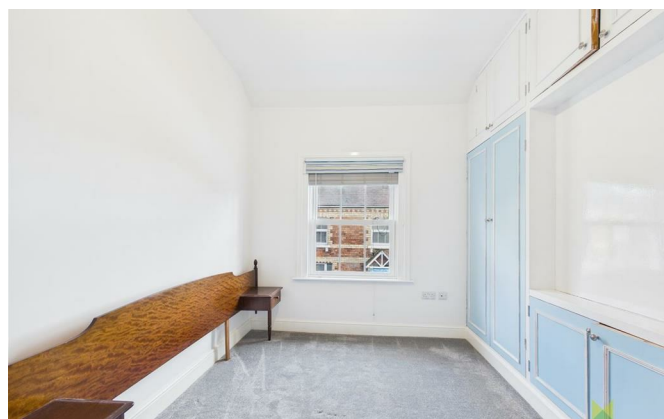
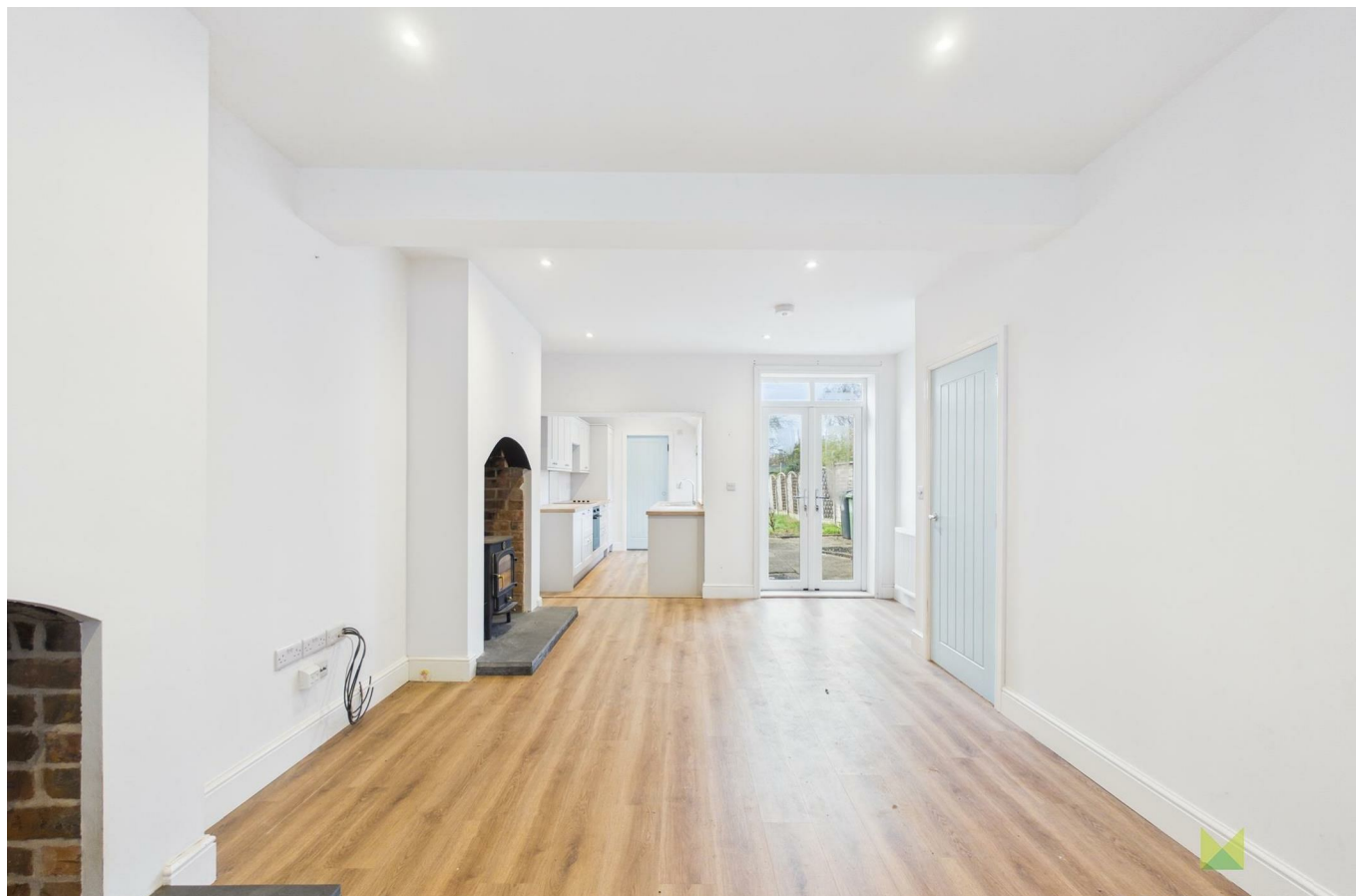
BATHROOM

OUTSIDE

Large rear garden

15 Station Road, Wem, Shrewsbury, SY4 5BQ.

3 Bedroom House - Semi-Detached
£950 PCM





Judy Bourne

Director at Monks

judy@monks.co.uk

Get in touch

Call. 01743 361422

Email. info@monks.co.uk

Click. www.monks.co.uk

Shrewsbury office

10a-11 Shoplatch,
Shrewsbury, Shropshire, SY1

We're available 7 days a week

HOME – four words that define who,
and what we are:

Honest, Original, Motivated, Empathetic

Energy Efficiency Rating		
	Current	Potential
Very energy efficient - lower running costs		
(92 plus) A		
(81-91) B		
(69-80) C		
(55-68) D		
(39-54) E		
(21-38) F		
(1-20) G		
Not energy efficient - higher running costs		
England & Wales	EU Directive 2002/91/EC	85

Environmental Impact (CO ₂) Rating		
	Current	Potential
Very environmentally friendly - lower CO ₂ emissions		
(92 plus) A		
(81-91) B		
(69-80) C		
(55-68) D		
(39-54) E		
(21-38) F		
(1-20) G		
Not environmentally friendly - higher CO ₂ emissions		
England & Wales	EU Directive 2002/91/EC	

Monks for themselves and for the vendors of this property, whose agents they are give notice that:

- These particulars provide a general outline only for the guidance of intended purchasers and do not constitute part of an offer or contract.
- All descriptions, dimensions and distances are approximate, references to state and condition, relevant permissions for use and occupation and other details are provided in good faith and believed to be correct.
- No person in the employment of Monks has any authority to make or give any representation or warranty whatever in relation to this property.
- Electricians and other appliances mentioned in these particulars have not been tested by Monks. Therefore prospective purchasers must satisfy themselves as to their working order.